

Installation Manual Addendum

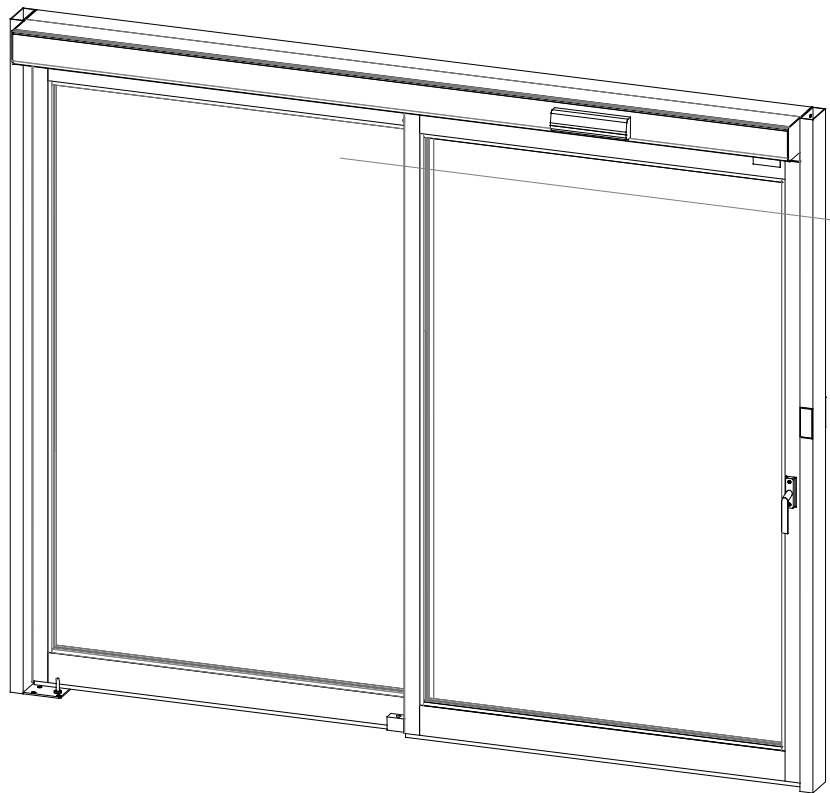
ASSA ABLOY

VersaMax™

ICU Touchless (Automatic Door) Package
2-Panel and Telescopic

ASSA ABLOY Entrance Systems

The global leader in
door opening solutions



1016379-1.0

Issued: 9-20-2017

©Copyright 2017, ASSA ABLOY Entrance Systems, an ASSA ABLOY Group company. All rights reserved. Reproduction in whole or in part without the express written permission of ASSA ABLOY Entrance Systems is prohibited.

In this manual, the word:

CAUTION - Means that personal injury or property damage can result from failure to follow instructions.

NOTE! - Means that there is additional helpful information directly relevant to the subject matter.

Table of Contents

- Revisions 4**
- Electronic Equipment Reception Interference 5**
 - Environmental Requirements 5
 - Compliance with Safety Standards 5
- Introduction 6**
- Models 6**
- Door Installation Process 6**
 - Unpacking 6
 - Hardware Installation 6
 - Tools 6
- Installation Process 7**
 - Positive Latch & Access Control Wiring Diagrams 13
- Signage 22**

Revisions

The following pages have been revised:

Page	Revision
13,..19	Updated connections on all wiring diagrams

Electronic Equipment Reception Interference

This equipment may generate and or be affected by radio frequency energy, and if not installed and used properly, in strict accordance with the manufacturer's instructions, it may cause interference to radio, television reception or other radio frequency type systems. It has been designed to comply with the emission limits in accordance with EN 61000-6-3 (US market FCC Part 15), which are designed to provide reasonable protection against such interference in a residential installation.

However, there is no guarantee that interference will not occur in a particular installation. If this equipment does cause interference to radio or television reception, which can be determined by turning the equipment off and on, the user is encouraged to try to correct the interference by one or more of the following measures:

- Re-orient the receiving antenna
- Relocate the receiver with respect to the equipment
- Move the receiver away from the equipment
- Plug the receiver into a different outlet so that equipment and receiver are on different branch circuits
- Check that protective earth (PE) is connected

If necessary, the user should consult the dealer or an experienced electronic technician for additional suggestions.

Environmental Requirements

Please act according to your local regulations and dispose of your old product(s) and packaging properly. The correct disposal will help prevent potential negative consequences for the environment and human health.

ASSA ABLOY Entrance Systems products are equipped with electronics and may also be equipped with batteries containing materials, which are hazardous to the environment. Remove this material from the operator before it is scrapped and make sure that it is disposed of safely along with the packaging.

According to European Directives and equivalent national legislation outside of the European Union, the following are the responsibility of the owner or caretaker of the equipment - that the equipment operates correctly, that regular inspection and maintenance and service is made, so that it gives sufficient protection in regard to safety and health.

Compliance with Safety Standards

Your door was designed to meet the latest operating and safety standards. In order to ensure the continued safe operation of your door, it is important that:

- Your door system is maintained in compliance with the standards of the industry.
- Proper decals and labels be applied and maintained on your doors. If decals are removed or cannot be read, request replacement decals when calling for service.
- Safety devices for all doors should be checked by an AAADM certified inspector annually and each time a door is serviced.

AAADM, the American Association of Automatic Door Manufacturers, has established a program to certify automatic door inspectors.

Introduction



This addendum contains information not found in the manuals listed below. This information is necessary for the installation, maintenance and servicing of the automatic door option.

This addendum must also be included with the following documentation when installed as a retrofit kit on a 2-panel or telescopic panel package.

- 1016377 – ASSA ABLOY Entrance Systems VersaMax ICU/CCU Equal Panel Installation Manual
- 1016378 – ASSA ABLOY Entrance Systems VersaMax ICU/CCU Telescopic Panel Installation Manual

Models

The touchless automatic door option can be installed on any ASSA ABLOY Entrance Systems ICU/CCU door package.

Door Installation Process

The door installation process incorporates unpacking and installing the automatic door hardware.

Unpacking

It is important that all packing material is removed from the door package so that it will not later interfere with the operation of the door.

Remove and dispose of all packaging and scrap materials in accordance with local regulations.

Hardware Installation

Depending on the options chosen, some or all of the hardware shown below must be installed on the door panels prior to installation. All hardware items are kitted with instructions and required fasteners.

Tools

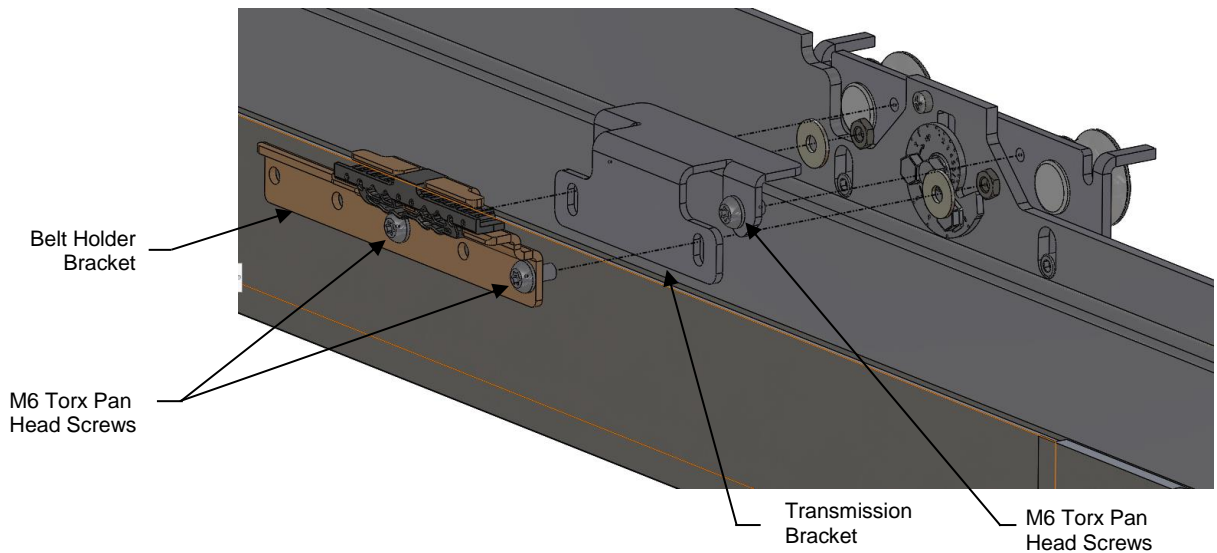
- 10mm wrench
- Rubber Mallet
- Channellock pliers
- Torx Screw drivers
- Drill & drill bits
- 6-32" Drill tap
- 1-1/4" hole saw
- Screw driver set
- Tape measure

Installation Process

Note!

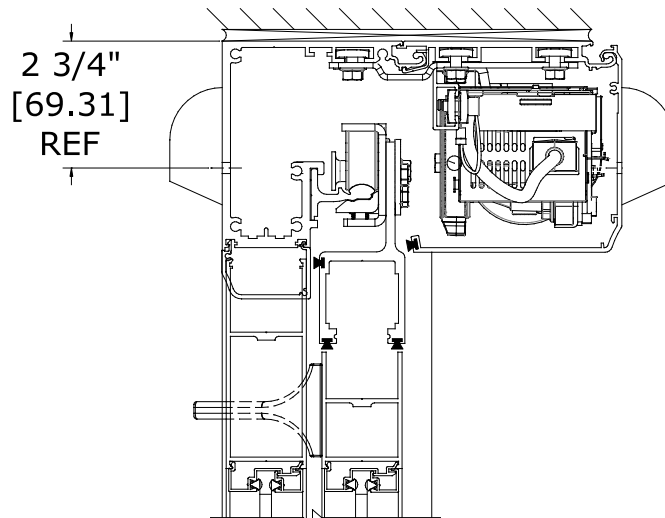
Required parts and hardware are available and necessary holes have been predrilled other than for optional kits.

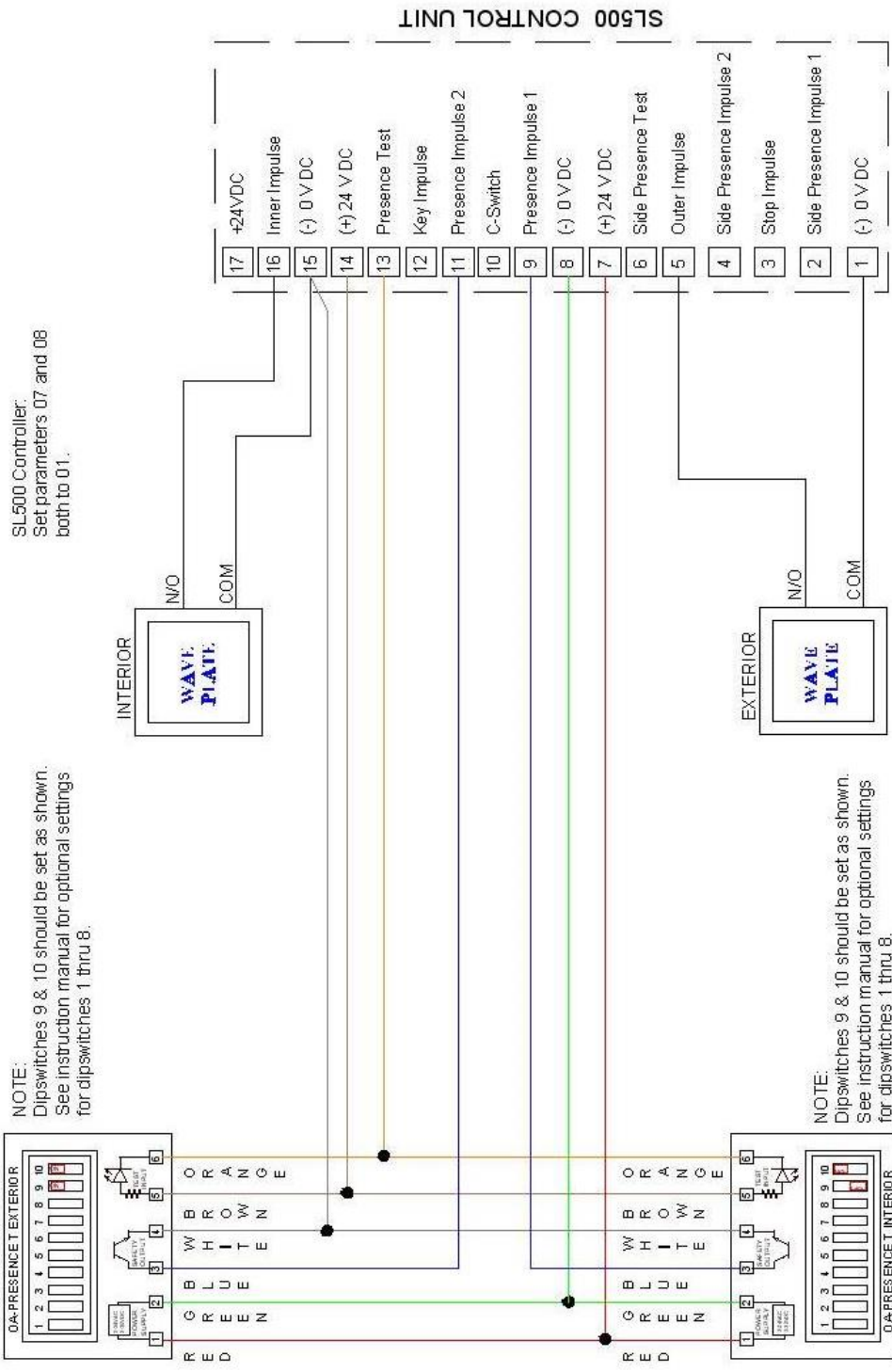
1. Install the transmission bracket to the factory installed belt holder bracket using the M6 Torx Pan head screws and M6 nuts and washers provided.
2. Attach the transmission bracket assembly to the carrier using the M6 Torx Pan head screws. For RH FBO/LH FSL or LH SA, this assembly attaches to the lead end of the carrier. For LH FBO/RH FSL or RH SA, this assembly attached to the trail end of the carrier.



(A) - Overhead Presence Sensors Installation

Note: Overhead presence sensors must be installed in the center of the clear door opening on both sides of the package. Use instructions and template provided to install and connect the presence sensors.

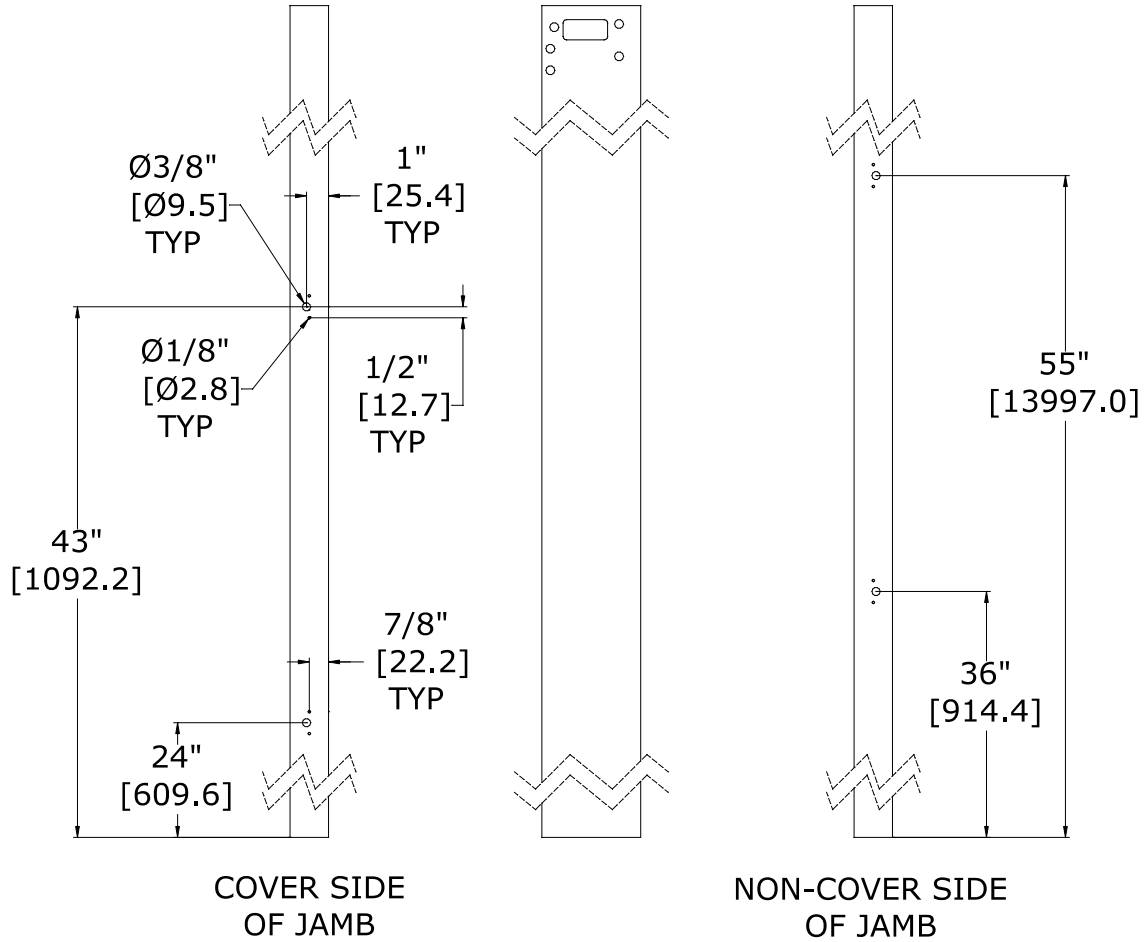




(B) - Install Safety Beams (Optional)

Standard Application

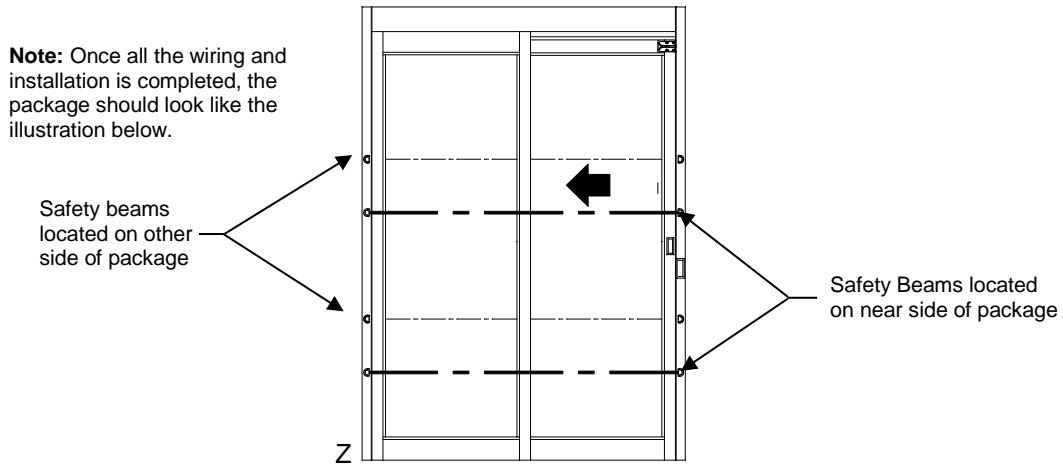
Install breakout beams per instructions found in Breakout Beam Kit.



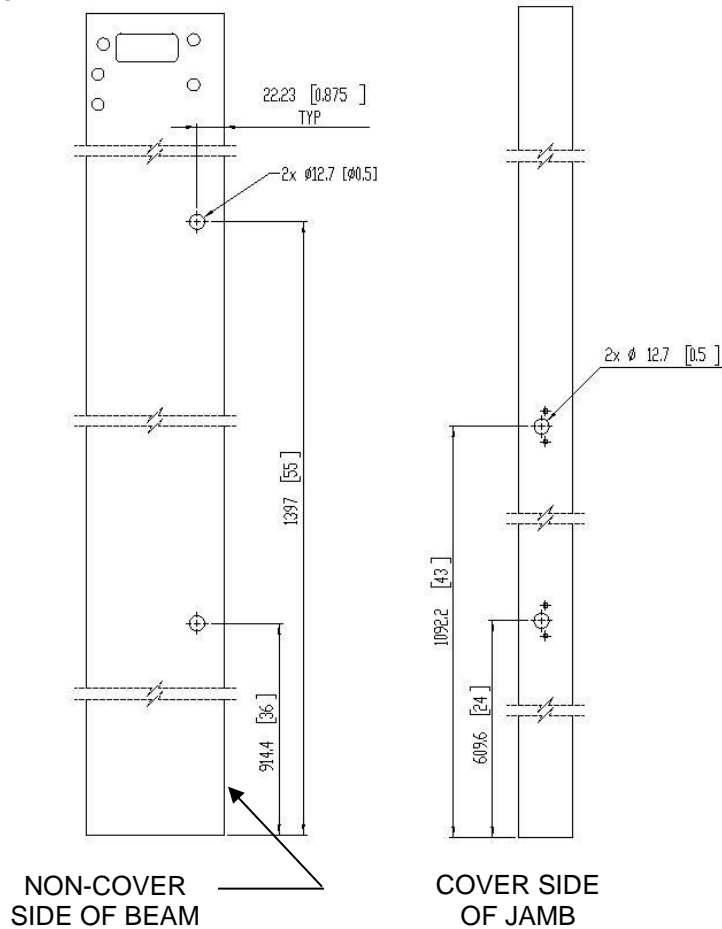
Note!

The location of hardware and subsequent holes are the same for both 2-panel and telescopic panel packages and have been predrilled in jambs.

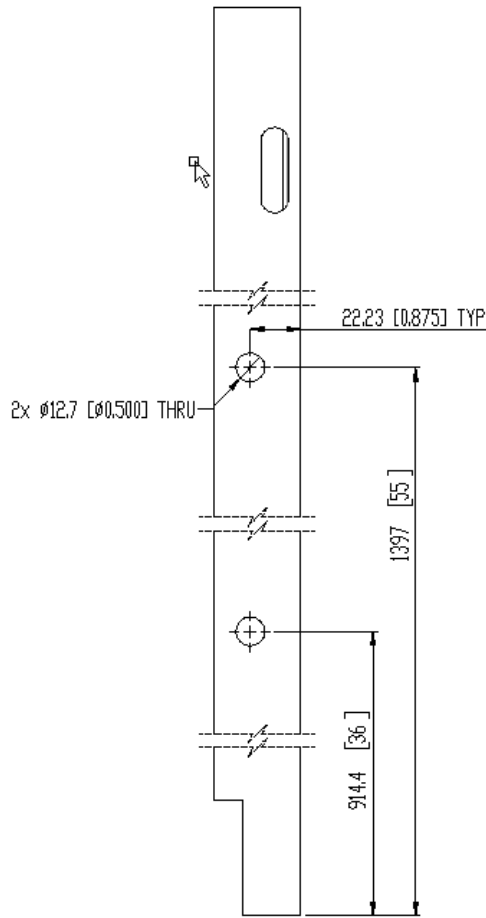
Use safety beam housing as a template and drill (8) holes 1/8" in each jamb. Then Install and connect safety beams, using instructions provided. (Mounting brackets for the safety beam box will be provided with package.)



Surface Applied Safety Beams



Surface Applied Filler Tube Safety Beams



(C) - Install Touchless Switches

Jamb Mounted Touchless Switch



ILL0297

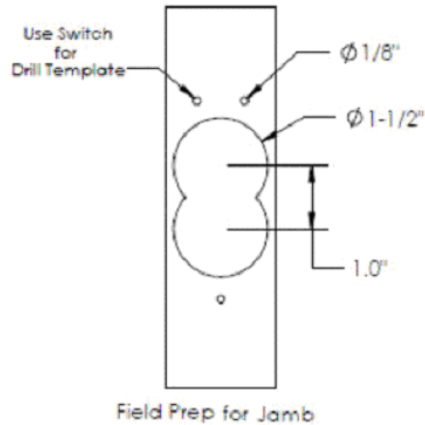
Note: If jamb mounted switch with factory prep, was selected, rectangular hole will be pre-drilled in jamb. Tapped mounting holes will be added in the field. If wall mounted or jamb mounted without factory prep selected, all mounting will be done in the field. Use instructions provided to install and connect touchless switches.

Wall Mounted Touchless Switch



ILL0298

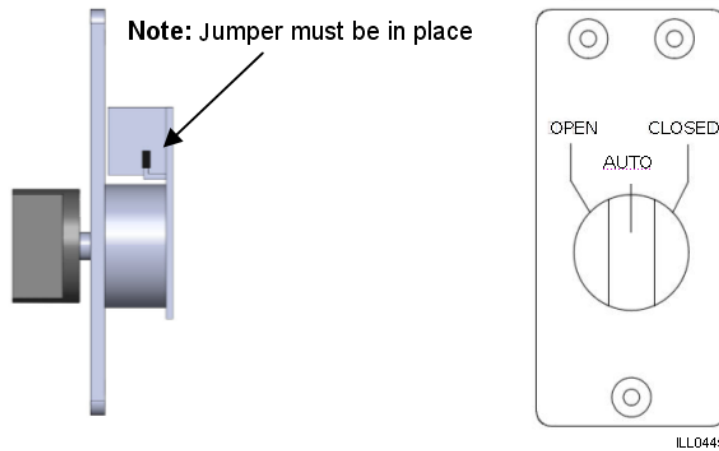
(D) - Install 3 Position Switch



ILL0293

Note!

If the door package is provided with the Electronic Shutter Strike, the Jamb Mounted Touchless Switch needs to be mounted at 48" centerline so as to avoid operational interference.



Program Selector Functions

Closed

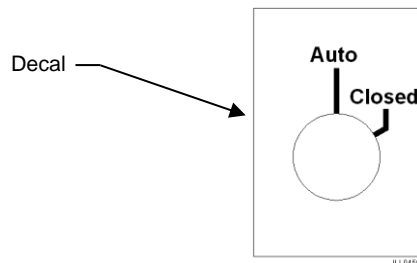
The inner and outer activation units are disconnected. The door can be opened with an emergency push-button/key switch (if installed).

AUTO

Two-way traffic, normal operation of the door. The door can be opened with the inner and outer activation units.

OPEN

The door is permanently held open. (This function is only available if door is tied into building's fire alarm.)



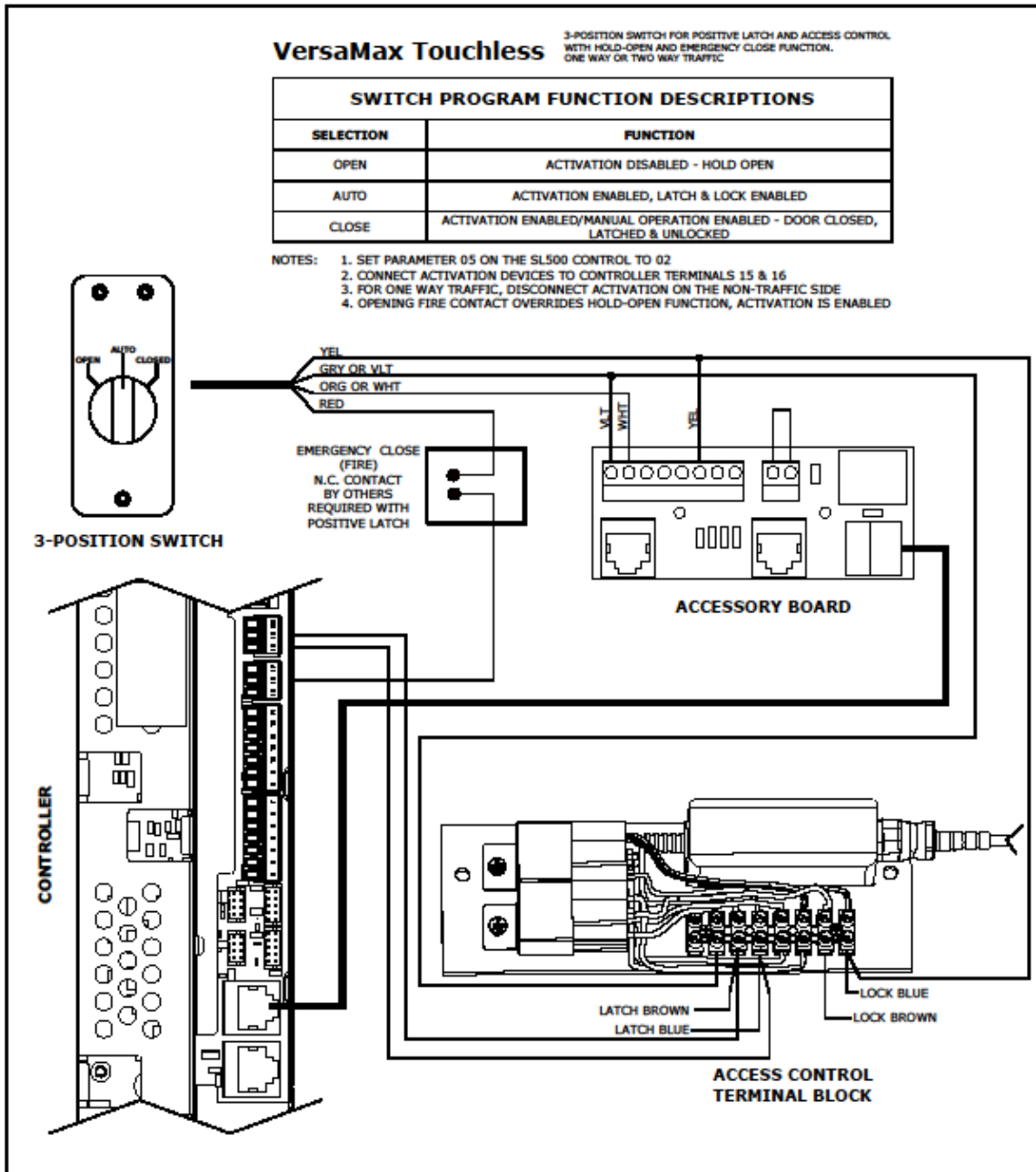
Note!

If the door package has smoke seals and the controller is not connected to the building fire alarm, the 'hold open' function will be disabled. For these cases, add the decal to the switch for correct function selector.

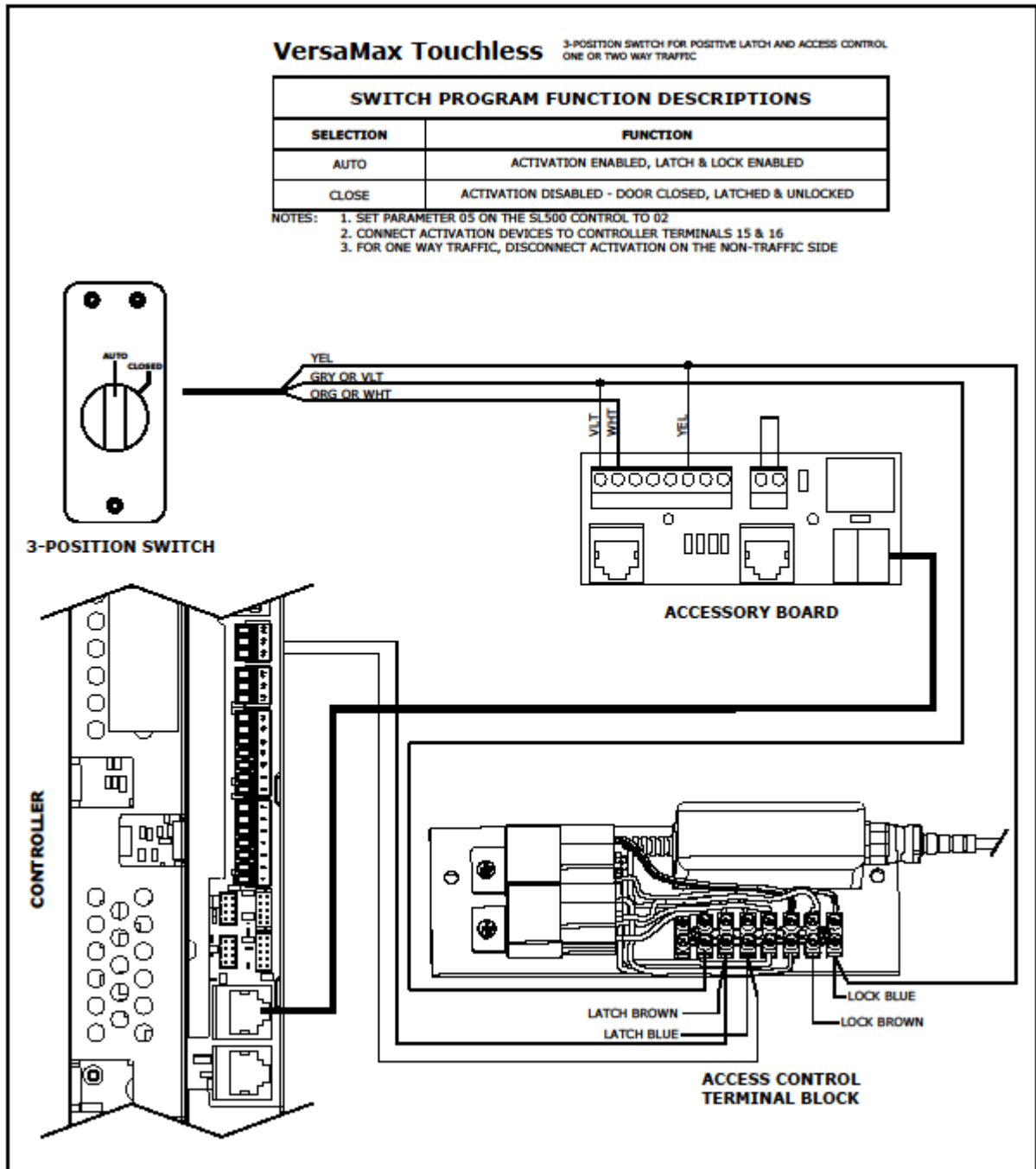
Positive Latch & Access Control Wiring Diagrams

Select correct drawing(s) below to complete electrical wiring and connections per customer option selected.

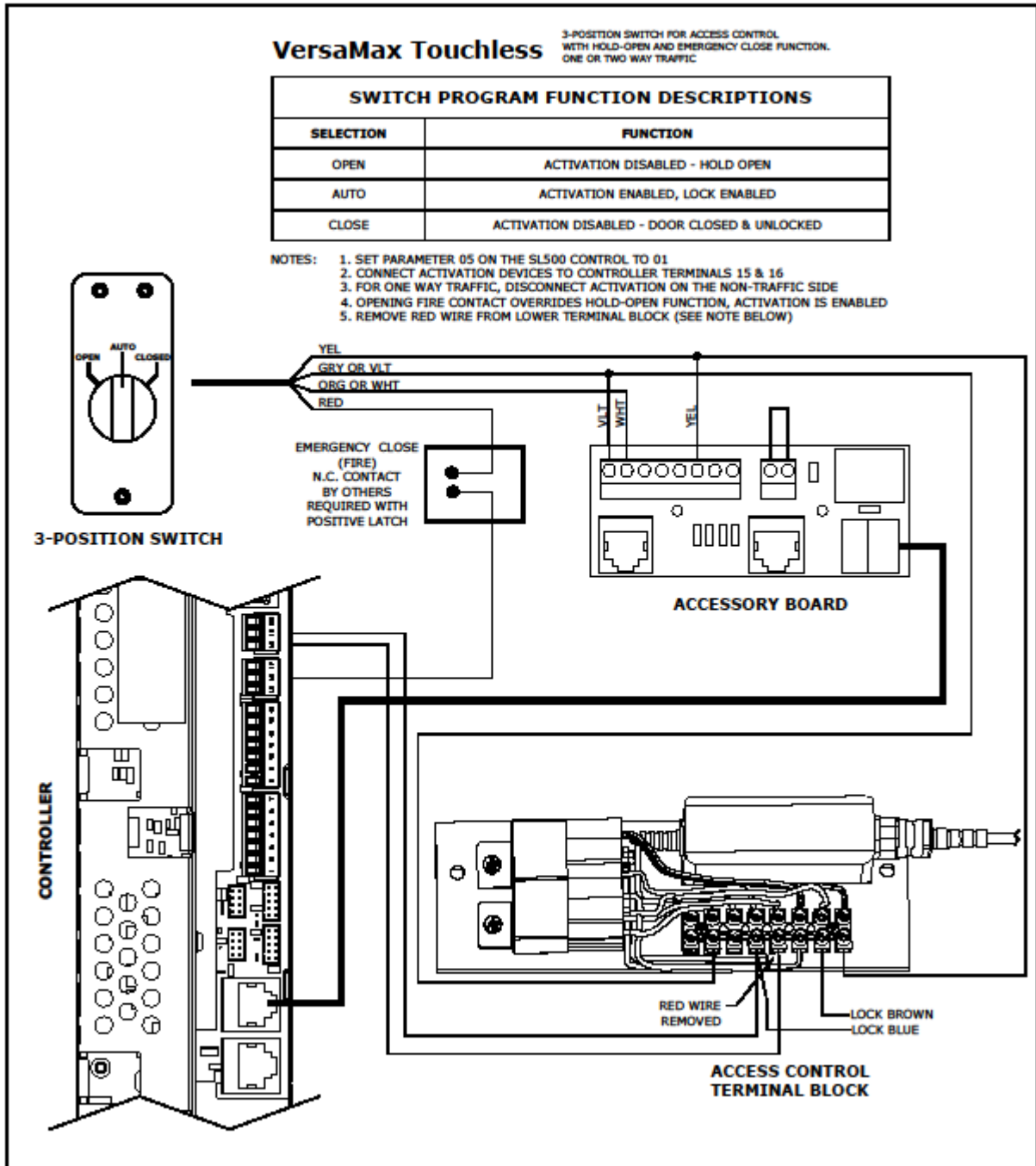
3-Position Switch for Positive Latch & Access Control with Hold-Open & Emergency Close Function



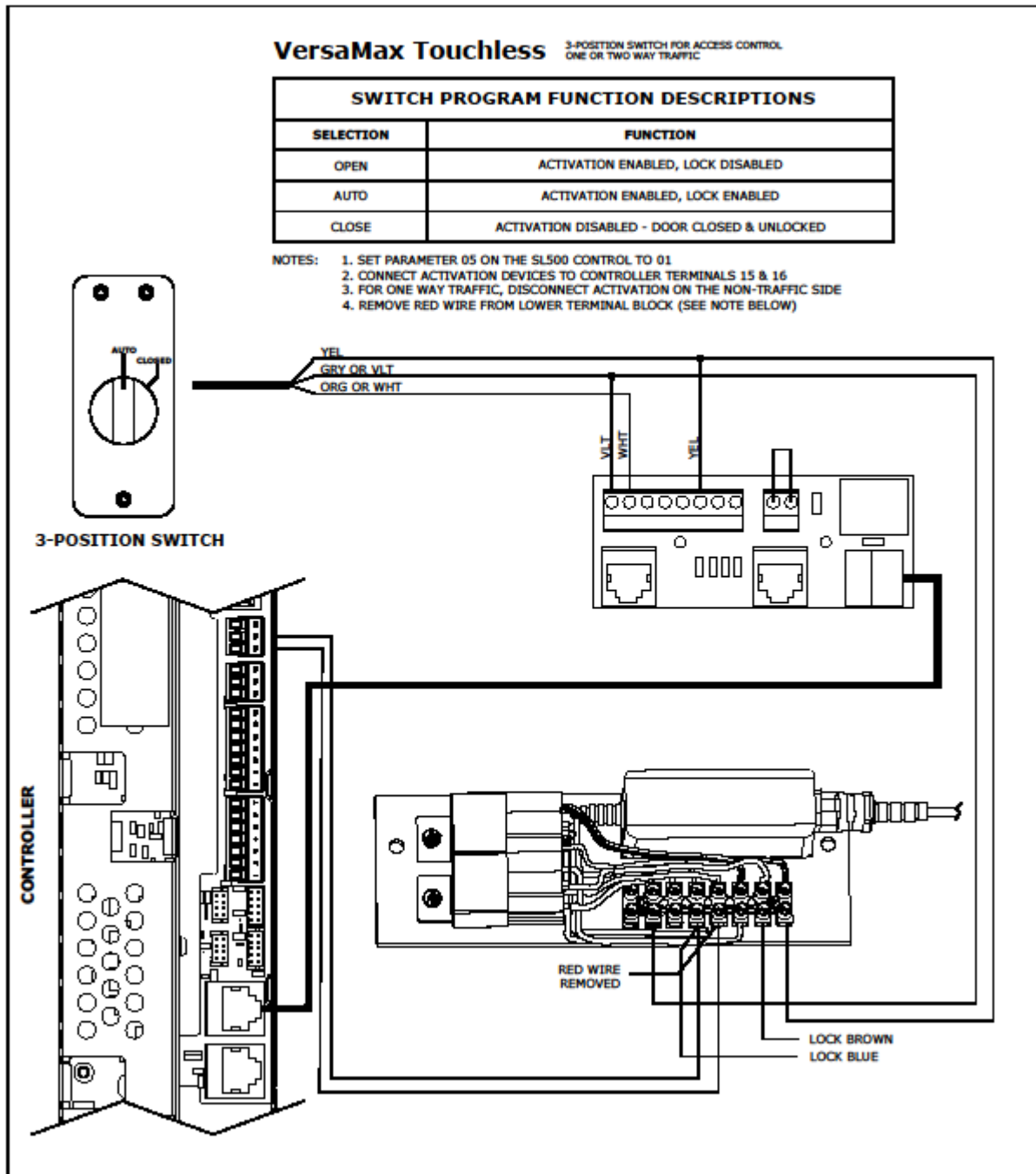
3-Position Switch for Positive Latch & Access Control



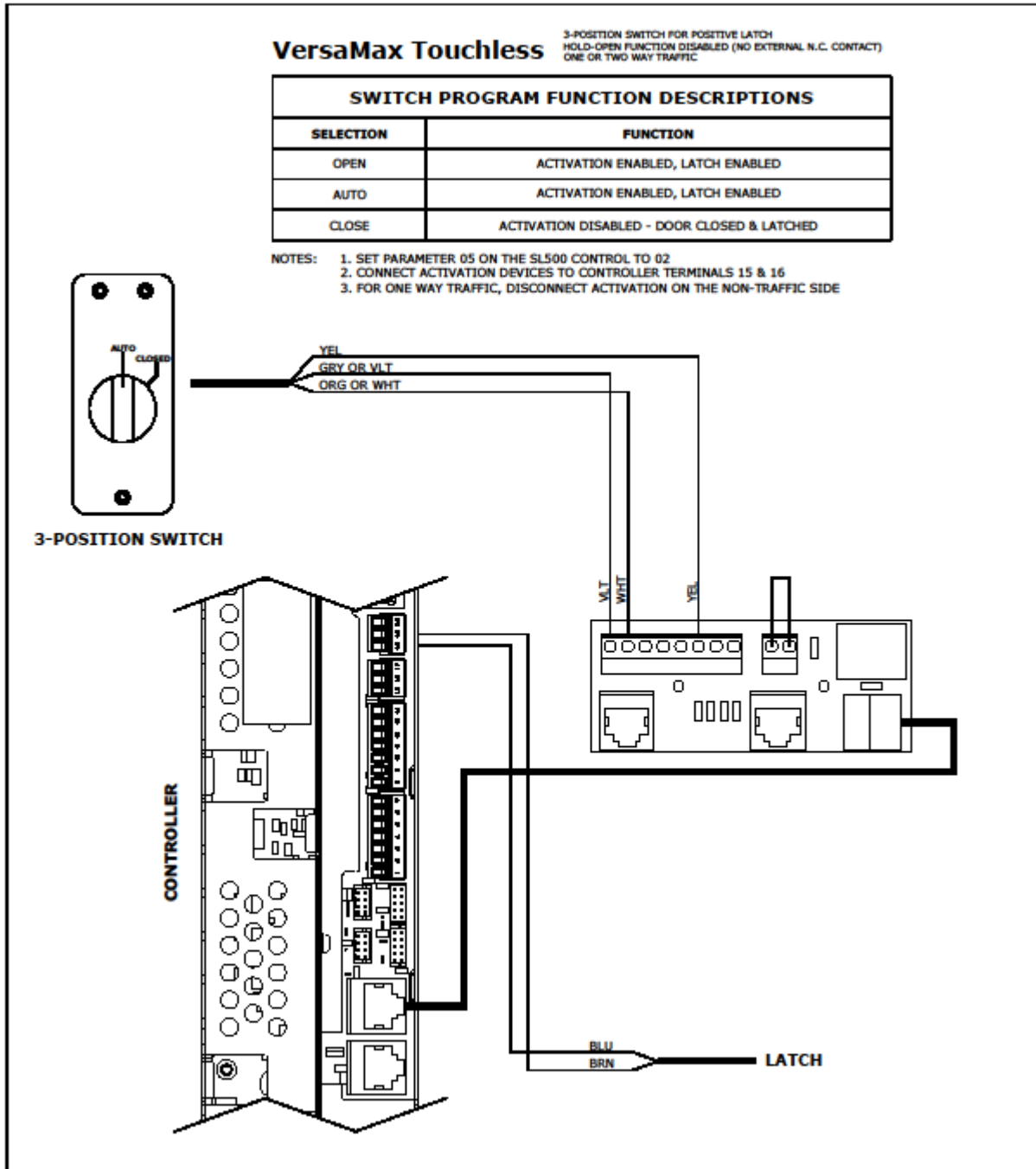
3-Position Switch for Access Control with Hold-Open & Emergency Close Function



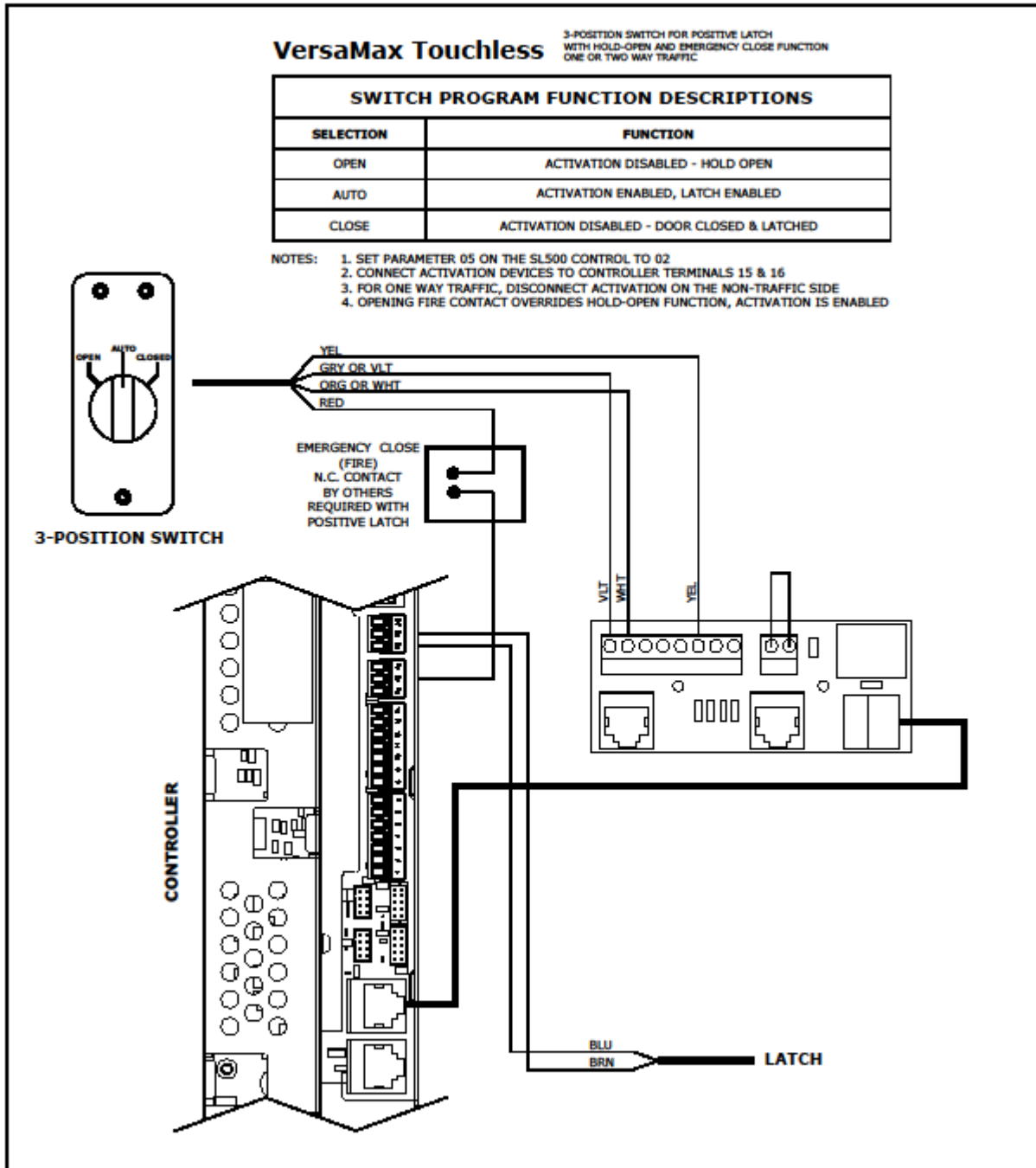
3-Position Switch for Access Control



3 Position Switch for Positive Latch Hold-Open Function Disabled (No External N.C. Contact)



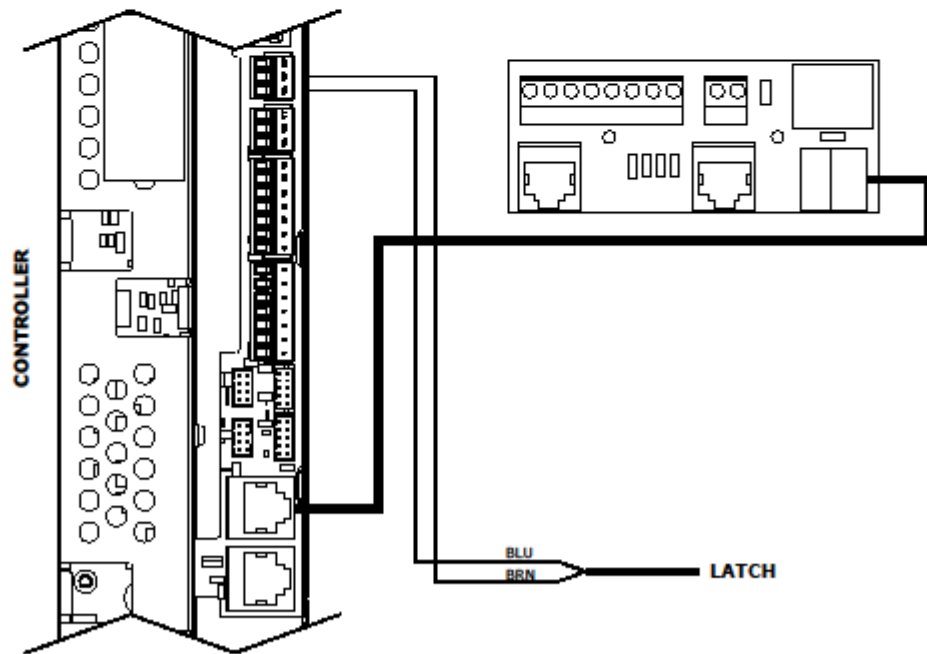
3-Position Switch for Positive Latch with Hold Open & Emergency Close Function



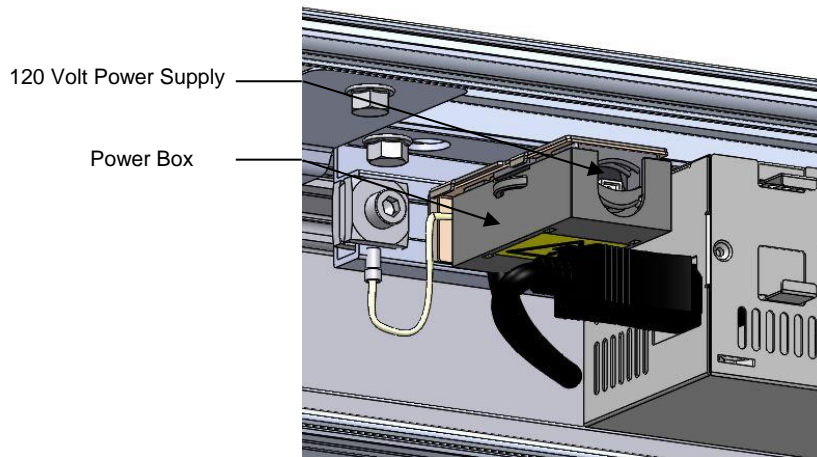
No Program Selection Switch Positive Latch

VersaMax Touchless

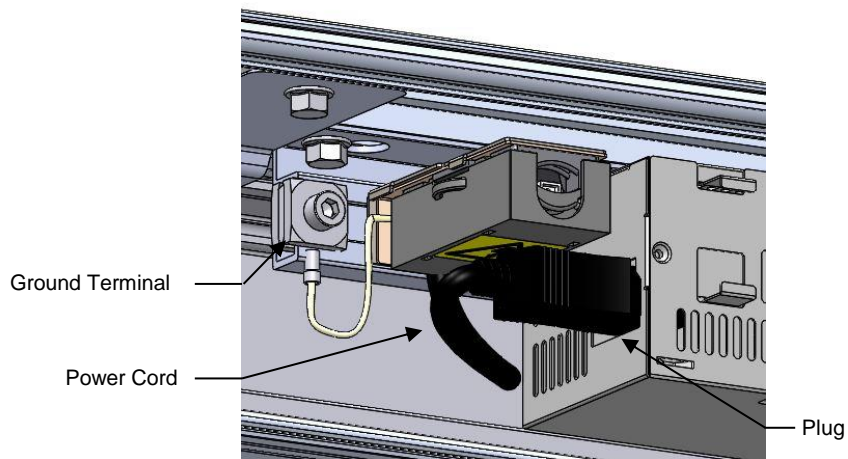
- NOTES:
1. SET PARAMETER 05 ON THE SL500 CONTROL TO 02
 2. CONNECT ACTIVATION DEVICES TO CONTROLLER TERMINALS 15 & 16
 3. FOR ONE WAY TRAFFIC, DISCONNECT ACTIVATION ON THE NON-TRAFFIC SIDE



3. Attach 120 Volt power supply to power box.



4. Plug power cord into Controller.



5. (Trackless Packages) Move door stops towards jambs so pivot block will hit pin.

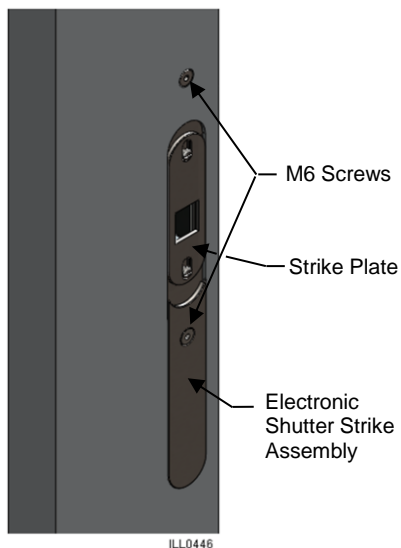
6. The controller is factory set to ANSI A156.38 Low Energy standard. Note the yellow label mounted inside the cover near the controller.

7. Check door adjustments and operating systems before testing door. Reference appropriate documentation shipped with this package before performing this task.

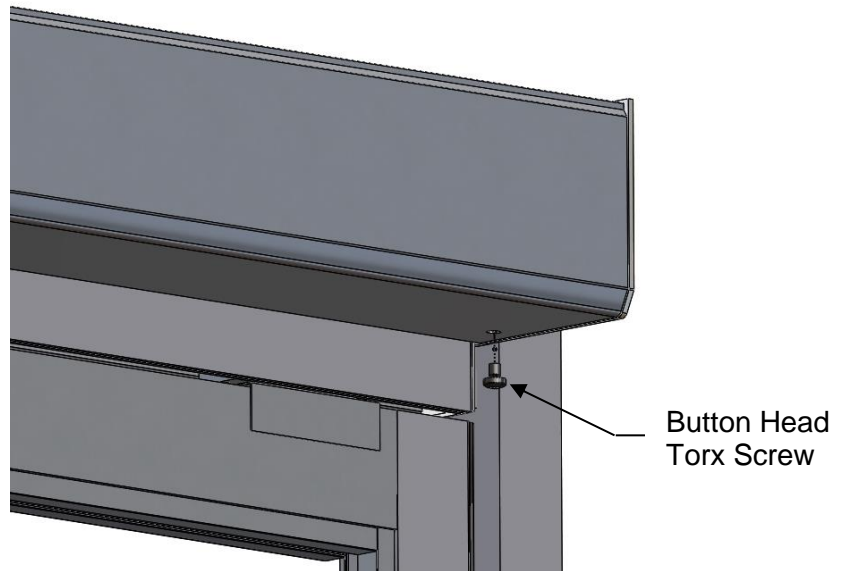
8. To adjust Access Control/Electric Shutter Strike, loosen the two M6 screws with Allen wrench.

9. Move Shutter Strike assembly to desired location and retighten M6 screws, securing assembly in desired location.

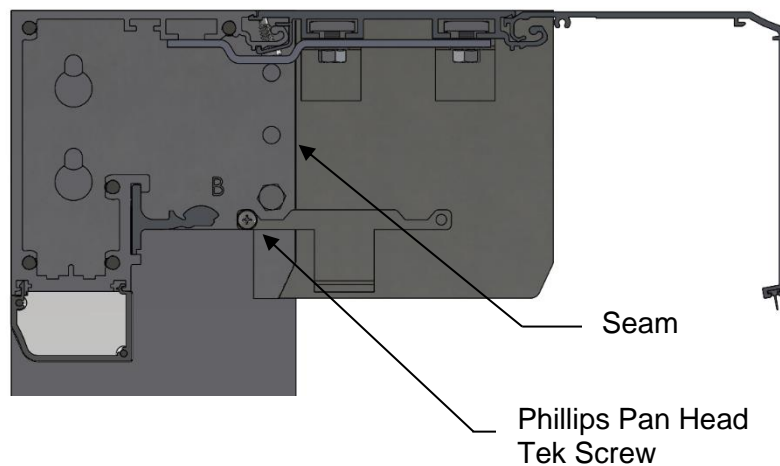
10. Once screws are tightened, confirm that Strike Plate still moves freely.



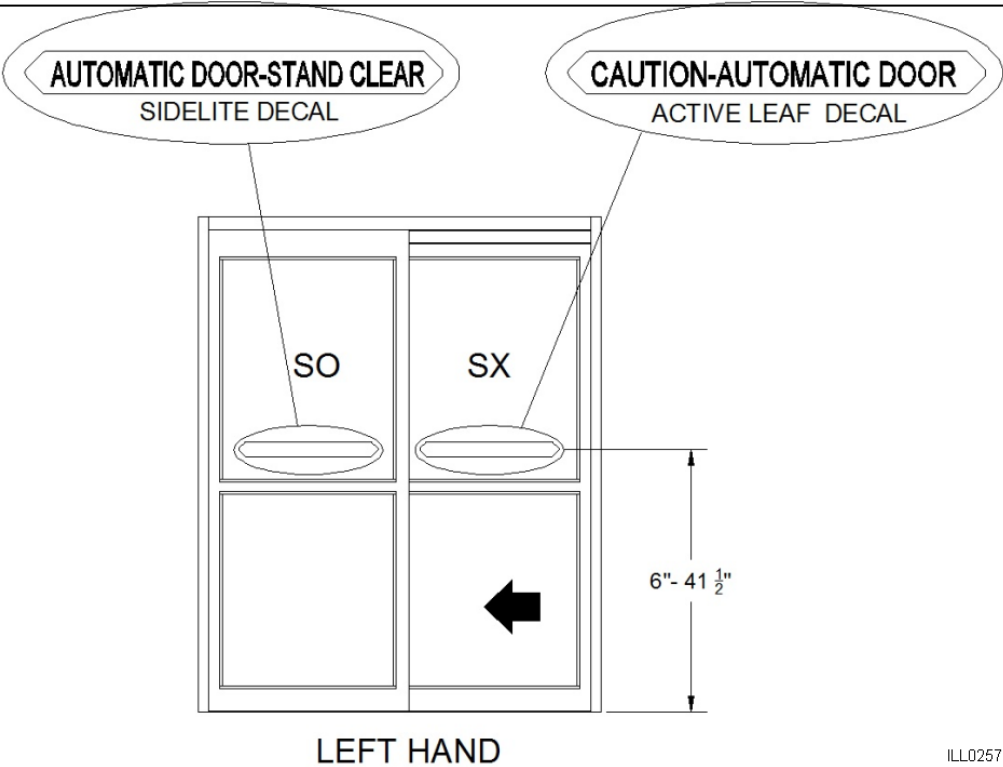
11. Close cover and align hole in end cap with pre-drilled hole at each end and using a Button Head Torx screw, lock the cover.



12. If the seam between the end plates are not flush, push the outer plate inward to close the gap and install the Phillips Pan Head Tek screw as shown.



Signage



Note!
The above graphic indicates the typical signage location and type for each package.

ASSA ABLOY

ASSA ABLOY Entrance Systems
1900 Airport Road
Monroe, NC 28110
Phone: 1-866-237-2687
Info.na.aes@assaabloy.com

©Copyright 2017, ASSA ABLOY Entrance Systems, an ASSA ABLOY Group company. All rights reserved.
Reproduction in whole or in part without the express written permission of ASSA ABLOY Entrance Systems is prohibited.